

ACTIVE FIRST




LEXINGTON
NORTH CAROLINA
PARKS AND RECREATION

FALL 2022

**WHAT WILL
YOU FIND
INSIDE?**

**ADULT LEAGUES
YOUTH CLASSES
HOLIDAY EVENTS
...AND MORE!**

@LEXPARKSANDREC  



WWW.LEXINGTONNC.GOV/PARKSANDREC
REGISTRATION.LEXINGTONNC.GOV



(336) 248 - 3960 - OFFICE
(336) 248 - 3969 - WEATHER HOTLINE



ROBBINS RECREATION CENTER
512 S. HARGRAVE ST
LEXINGTON, NC 27292
OFFICE HOURS: 8AM - 5PM (M - F)

MISSION

To promote community pride and wellness through diverse, intentional, and relevant leisure opportunities.

VISION

A vibrant, healthy, energized, and progressive community.

VALUES

Welcoming environment, accessible service, enriching experience, safe atmosphere, quality parks and programs.



WHAT'S INSIDE

YOUTH PROGRAMS
ATHLETIC PROGRAMS
SPECIAL EVENTS
ADMINISTRATION
PARK DIRECTORY

PARKS AND RECREATION STAFF

LAURA DURAN	PARKS AND RECREATION DIRECTOR
ANDREW LANCE	PARKS AND RECREATION MANAGER
BEVERLY EVERHART	SERVICES COORDINATOR
COURTNEY AMBROSE	YOUTH PROGRAM COORDINATOR
MICHELLE BLUME	ATHLETIC COORDINATOR

LEXINGTON CITY COUNCIL

MAYOR - JASON HAYES

WHITNEY BROOKS	GARRETT HOLLOWAY
JOHN BURKE	JIM MYERS
FRANK CALLICUTT	JOE WATKINS
DR. KEITH CURRY	MATT WELBORN

PARKS AND RECREATION ADVISORY BOARD

CHAIR - CHRIS PHELPS

CHARLES CARTER JR.	Lloyd Pace
DAVID HILLER	Kristi Thornhill
TIM HOLT JR.	Veronica Tim
BETH JOHNSON	Kelly Walker

**REGISTER &
RESERVE!**



ONLINE
registration.lexingtonnc.gov



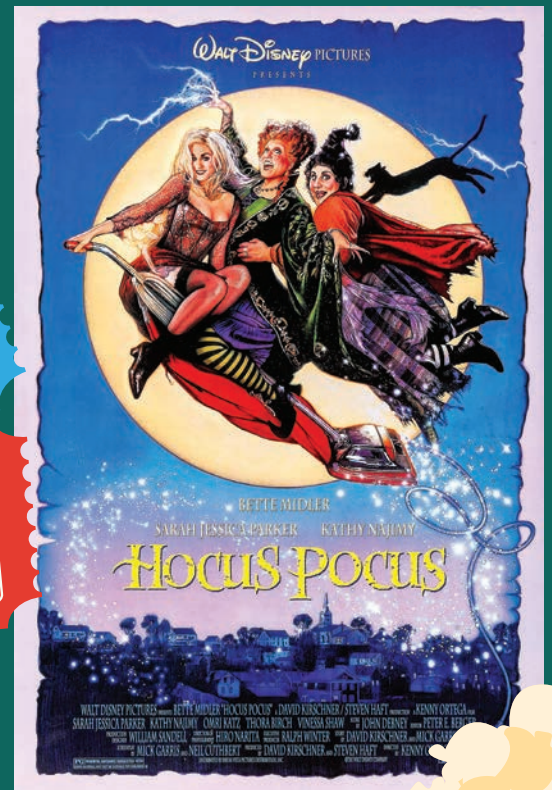
IN PERSON
Robbins Rec Center
512 S. Hargrave Street

@LEXPARKSANDREC  

REELS @ ROBBINS

SEPTEMBER 30
7:00 - 9:00

OCTOBER 14
7:00 - 9:00



**GRAB A BLANKET AND A CHAIR
AND COME ENJOY A FREE
OUTDOOR MOVIE IN THE PARK!**

POPCORN

POPCORN

YOUTH PROGRAMS

Registrations end the day before class at midnight.

**REGISTER FOR PROGRAMS @
REGISTRATION.LEXINGTONNC.GOV**

KIDS CUISINE • AGES 5 - 12

TUESDAY, 6:00PM - 6:45PM

Learn fundamental cooking techniques and skills such as measuring, preparation, and safety in the kitchen. Don't plan on cooking a big dinner, because we will spoil their appetite.

PIZZA WAFFLES	9/13	\$5 / \$6	18407	BREAKFAST FOR DINNER	11/8	\$5 / \$6	18440
BANANA PUDDING TACOS	9/27	\$5 / \$6	18416	CINNAMON CRUNCH BARS	11/22	\$5 / \$6	18445
HERSHEY KISS PRETZELS	10/4	\$5 / \$6	18422	COOKIE DECORATING	12/6	\$5 / \$6	18450
MONSTER KRISPIES TREATS	10/25	\$5 / \$6	18435	SNOWMAN S'MORES	12/20	\$5 / \$6	18456

STEM Kids • AGES 7 - 12

WEDNESDAY, 6:00PM - 6:45PM

Science, Technology, Engineering, and Math - these classes weren't this fun when we were kids! Your child won't even realize they are learning in the middle of having so much fun.

FOIL BALL CHALLENGE	9/7	\$5 / \$6	18403	SLIME-O-RAMA	11/2	\$5 / \$6	18437
SUPERHERO ROBOTIC ARM	9/21	\$5 / \$6	18412	BUILDING CHALLENGES	11/30	\$5 / \$6	18446
SNAP CIRCUITS	10/5	\$5 / \$6	18424	MARSHMALLOW IGLOOS	12/7	\$5 / \$6	18451
PUMPKIN VOLCANO	10/19	\$5 / \$6	18427	SNAP CIRCUITS	12/14	\$5 / \$6	18452



CRAFTY KIDS • AGES 5 - 12

THURSDAY, 6:00PM - 6:45PM

Encourage your kid's creativity and artistic abilities! They will explore different mediums, techniques, and materials, and express themselves through these fun and engaging crafts.

BOTTLE BOTTOM TURTLES	9/8	\$5 / \$6	18405	DIY FALL WREATHS	11/3	\$5 / \$6	18439
HANDPRINT SUNFLOWERS	9/22	\$5 / \$6	18414	COTTON BALL PAINTING	11/17	\$5 / \$6	18443
PAPER PLATE PUMPKINS	10/6	\$5 / \$6	18426	PAPER SNOWFLAKES	12/1	\$5 / \$6	18448
PUMPKIN PAINTING	10/20	\$5 / \$6	18429	PIPE CLEANER SNOWFLAKES	12/15	\$5 / \$6	18454

OUTDOOR EXPLORERS CLUB

WEDNESDAYS, 3:30PM - 4:30PM • AGES 7 - 12

There is so much to explore, right outside your door. Learn how to use a compass, taste campfire food, and learn about local plants and how to care for them. Don't forget a little geocaching and scavenger hunts!

9/14	\$5 / \$6	18408	10/5	\$5 / \$6	18423
9/28	\$5 / \$6	18417	10/26	\$5 / \$6	1843



WINTER BREAK CAMP

K - 5TH GRADERS • 7:30AM - 5:30PM DAILY

Kids are out of school, but we have lots of fun planned here at Parks and Rec! Kids will enjoy field trips to the library and museum, swimming at the YMCA, adventures in the park and so much more!

12/22	\$10 / \$15	13072	12/30	\$10 / \$15	13075
12/28	\$10 / \$15	13073	1/3	\$10 / \$15	13076
12/29	\$10 / \$15	13074			

TOTS CUISINE • AGES 3 - 4

TUESDAY, 5:30PM - 6:00PM

Introduce your preschooler to the kitchen and make a delicious treat together.

ANIMAL FACE TOAST	9/13	\$5 / \$6	18406	BREAKFAST FOR DINNER	11/8	\$5 / \$6	18440
PB & BANANA STACKERS	9/27	\$5 / \$6	18415	APPLE PIE IN A CUP	11/22	\$5 / \$6	18444
PUMPKIN PATCH DIRT CUPS	10/4	\$5 / \$6	18421	COOKIE DECORATING	12/6	\$5 / \$6	18449
MONSTER KRISPIE TREATS	10/25	\$5 / \$6	18434	SNOWMAN S'MORES	12/20	\$5 / \$6	18455

CRAFTY TOTS • AGES 3 - 4

THURSDAY, 5:30PM - 6:00PM

Unleash your child's inner artist to design "masterpieces" worthy of prime real estate on your fridge!

BOTTLE BOTTOM TURTLES	9/8	\$5 / \$6	18404	ENVELOPE PUPPETS	11/3	\$5 / \$6	18438
PAPERBAG SCARECROW	9/22	\$5 / \$6	18413	APPLE STAMPING	11/17	\$5 / \$6	18442
PAPER PLATE PUMPKINS	10/6	\$5 / \$6	18425	PAPER SNOWFLAKES	12/1	\$5 / \$6	18447
PUMPKIN PAINTING	10/20	\$5 / \$6	18428	CRAFT STICK SNOWMAN	12/15	\$5 / \$6	18453

TOT CLASSES PROMOTE BONDING, FINE MOTOR SKILLS, CREATIVITY, & COGNITIVE ABILITIES

TUMBLING WORKSHOPS

Kids will focus on specific skills they want to learn such as somersaults, cartwheels, handstands, back handsprings, and more!

Saturday, September 17

AGES 7 - 8	9:00 - 10:00AM	\$10 / \$12	18409
AGES 9 - 10	10:15 - 11:15AM	\$10 / \$12	18410
AGES 11 - 12	11:30AM - 12:30PM	\$10 / \$12	18411

Saturday, October 1

AGES 7 - 8	9:00 - 10:00AM	\$10 / \$12	18418
AGES 9 - 10	10:15 - 11:15AM	\$10 / \$12	18419
AGES 11 - 12	11:30AM - 12:30PM	\$10 / \$12	18420

FALL TUMBLING

MONDAY, OCTOBER 24, NOVEMBER 7, 14, 21, 28

Kids will learn the basics like somersaults, cartwheels, handsprings and more, and then show off these skills at the Lexington Christmas Parade on 12/5!

AGES 4 - 6	4:15 - 4:45PM	\$20 / \$25	18430
AGES 4 - 6	4:50 - 5:20PM	\$20 / \$25	18431
AGES 7 - 9	5:25 - 6:10PM	\$20 / \$25	18432
AGES 10 - 15	6:15 - 7:00PM	\$20 / \$25	18433

ATHLETIC PROGRAMS

**REGISTER FOR PROGRAMS @
REGISTRATION.LEXINGTONNC.GOV**



SKATEBOARDING SKILLS

SATURDAY, 9:30AM - 10:20AM • AGES 5+
Is your child looking to take their skating to the next level? Our experienced instructor Nate is a local that will guide kids through skills like dropping in, ollies, kick turns, pumps, and other skills along with park etiquette!

9/10 - 11/5 \$10 / \$12 (PER CLASS)

BASEBALL ACADEMY

It might be fall, but what better time to work on the fundamental skills of the game? Kids will focus on hitting, fielding, pitching, and catching, with instruction led by LSHS Varsity Baseball Coach and players.

Saturdays, 9:00AM - 11:00AM • AGES 7 - 9

9/10	\$10 / \$12	11280
9/17	\$10 / \$12	11282
9/24	\$10 / \$12	11284
10/1	\$10 / \$12	11286

Saturdays, 9:00AM - 11:00AM • AGES 10 - 12

9/10	\$10 / \$12	11281
9/17	\$10 / \$12	11283
9/24	\$10 / \$12	11285
10/1	\$10 / \$12	11287

YOUTH BASKETBALL

Our youth basketball program partners with the J. Smith Young YMCA. Teams will practice and play from December - February.

Registration ends on December 2.

5 - 6 Coed	\$50 / \$60	11297
7 - 8 Coed	\$50 / \$60	11298
9 - 10 Boys	\$50 / \$60	11299
9 - 12 Girls	\$50 / \$60	11300
11 - 12 Boys	\$50 / \$60	11301

SPORTS SAMPLERS

Let your little one try out baseball, soccer, and football without having to commit to a season!

Mon / Wed, 5:30PM - 6:00PM • AGES 3 - 4

8/16 - 8/25	\$10 / \$12	11271
9/6 - 9/15	\$10 / \$12	11273
10/3 - 10/12	\$10 / \$12	11291

Mon / Wed, 6:00PM - 6:30PM • AGES 5 - 6

8/16 - 8/25	\$10 / \$12	11272
9/6 - 9/15	\$10 / \$12	11274
10/3 - 10/12	\$10 / \$12	11292

GIRLS' LACROSSE

Led by Davidson Youth Lacrosse Association (DYLA), our program is designed to teach the game of lacrosse to girls in 2nd - 8th grade. Each session will build on prior skills, and the season will finish with scrimmages.

Saturdays, 10:00AM - 11:15AM • AGES 7+

9/10 - 11/5	\$20 / \$25	11275
-------------	-------------	-------





COED ADULT KICKBALL

COED ADULT SOFTBALL LEAGUE

TUESDAY / THURSDAY NIGHTS @ FINCH PARK

Ready to hit some dingers? Get your team together, then come out and show what you got!

7 game season plus playoffs.

SEPT - NOV

\$450 TEAM FEE

11276

COED ADULT KICKBALL LEAGUE

TUESDAY / THURSDAY NIGHTS @ FINCH PARK

Grab some friends or meet new ones and come play some kickball! Bring the kids, they can play on the playground while you have some fun.

7 game season plus playoffs.

OCT - NOV

\$300 TEAM FEE

11277

HAVE QUESTIONS? CONTACT MICHELLE BLUME AT
336-248-3960 OR MDBLUME@LEXINGTONNC.GOV.

GET THE TEAM TOGETHER... DO YOU HAVE
WHAT IT TAKES TO BRING HOME THE 'CHIP'?



COED ADULT SOFTBALL

@LEXPARKSANDREC  

SPECIAL EVENTS

REGISTER FOR PROGRAMS @
REGISTRATION.LEXINGTONNC.GOV



Light up the Block

Christmas Decorating Contest

- CATEGORIES INCLUDE:
- Best Decorated • Best Block •
 - Most Unique • Best Theme •
 - COMMUNITY CHOICE •



LIGHT UP THE BLOCK

Think your house or neighborhood has the best Christmas light display? Register your home and then deck the halls!

REG BY DEC 4 FREE 16250

WHERE'S RANGER?

Ranger the Park Elf visits Lexington to pop up at holiday events and parks! Guess where he is and be entered to win a \$50 Amazon gift card!

FOLLOW US ON FACEBOOK FOR MORE DETAILS!

GINGERBREAD HOUSE CONTEST

Grab the family and some candy, and create the perfect gingerbread house! Then send us a photo and chow down on your delicious creations!

SUBMIT BY DEC 18 FREE 11277

WHERE'S
RANGER?



GINGERBREAD HOUSE CONTEST!



ROBBINS REC CENTER

THE PERFECT PLACE FOR YOUR NEXT PARTY OR GATHERING. SEATS 75, AND TABLES AND CHAIRS ARE INCLUDED.



CALL 336-248-3960 TO BOOK YOUR SPACE!

DO
MORE,
BANK
LESS.



At Civic, we know so much depends on what you do with your money. Let us help make things a little easier, so you can focus on what's most important.

Let's work together — visit civicfcu.org.

Federally insured by NCUA

CIVIC
FEDERAL CREDIT UNION

GRINCH AT FINCH

DECEMBER 3RD
9 TO 11AM



He's a mean one, Mr Grinch... but he is stopping by Finch Park so all the little Who's can come and get a picture with him!

REG BY NOV 27 FOR A PERSONALIZED LETTER! FREE 16250

ADMINISTRATION

PHOTO USE

Lexington Parks and Recreation may photograph or video participants enrolled in activities, classes, or programs, or in City of Lexington parks. These are used in program guides, brochures, website, social media, and other media publications.

CHANGES AND REFUNDS

Programs have a minimum number of participants needed, and participants must register by the deadline. You are entitled to a full refund for a cancelled program. Payments made in cash or by check are processed in accordance with our Accounts Payable schedule, and typically issued within 7-14 business days. We do not give refunds for programs after they begin.

ADDITIONAL INFORMATION

The full registration fee for a program is due at the time of registration. No spots will be held without full payment. We will take waiting lists for programs that are filled and expand a class if possible. Residents are those that live within city limits and support Lexington Parks and Recreation through property taxes. The best way to determine residency is to check your property tax bill, or contact us.

INCLEMENT WEATHER

If it becomes unsafe to run or continue a program due to inclement weather, we will postpone or cancel the event. For cancelled shelter reservations, users have three (3) business days to reschedule. There will be no refunds given for shelter reservations. For closures and cancellations, call our weather hotline (336-248-3969), or check our Facebook page.

WANT TO GET INVOLVED?

Many of our programs and events could not happen without community support. Donations, sponsorships, and volunteers allow us to offer low-cost youth athletic leagues, free festivals, and increase the overall quality of programming. If you would like to become involved, please contact us!

PARK / SHELTER INFORMATION

All parks are open 365 days a year, except Finch Park, which is closed on Thanksgiving and Christmas. Shelters are available to reserve at Finch Park; all other shelters are on a first-come, first-served basis.

FINCH PARK SHELTER TIME SLOTS

APRIL - SEPTEMBER	OCTOBER - MARCH
8:00 - 11:00AM	10:00AM - 1:00PM
12:00 - 3:00PM	2:00 - 5:00PM
4:00 - 7:00PM	

The cost is \$25 for city residents and \$50 for non-residents. Reservation fees are non-refundable. If a cancellation due to inclement weather is necessary, an alternate date can be scheduled, but must be done within three (3) business days, and must be within the current calendar year.

ABOUT THIS GUIDE

The **#activefirst** program guide is published in the spring and fall. Every effort is made to ensure the accuracy of information in this guide, but changes may occur. Please confirm program details and fees prior to registering. If you would like an additional copy or have questions, please call us at 336-248-3960. The guide also is published on our website at www.lexingtonnc.gov/parksandrec.



Electric • Natural Gas • Water Resources

Award Winning, Reliable, Cleaner Energy Alternatives

Serving Davidson County Since 1904

PARK DIRECTORY

		WALKING TRAIL	PLAYGROUND	SHELTER	TENNIS		PICKLEBALL	BASKETBALL	BASEBALL	SOFTBALL	MULTIPURPOSE	MOUNTAIN BIKE TRAIL	POOL	GOLF COURSE	SPLASH PAD	SKATE PARK	SEATING AREA
					COURTS	FIELDS											
BINGHAM TENNIS CENTER	205 W HEMSTEAD ST				8	2											
CECIL STREET	106 CECIL ST		✓					✓									
CHILDERS	100 SWING DAIRY RD		✓	✓				✓									
ERLANGER	605 PARK CIR	1/3 MILE	✓														
EAST 3RD AVENUE	315 E 3RD AVE		✓					✓									
FINCH	15 PAUL BECK RD	1/4 MILE	2	5				✓	✓	2	✓	✓					
FOURTH STREET	412 E 4TH ST		✓	✓				2									
GREEN NEEDLES	264 CHARLOTTE DR		✓	✓				✓			✓						
GRIMES	25 HEGE DR	1/2 MILE	✓		✓												
HILLCREST CIRCLE	8 HILLCREST CIR																✓
HOLT-MOFFITT	101 W 9TH AVE								✓								
HOLT STREET	602 HOLT ST		✓					✓									
JAYCEE	307 BURLER ST	1/4 MILE	✓	✓													
LEXINGTON AQUATIC PARK	207 FOREST ROSE DR												✓				
LEXINGTON GOLF CLUB	200 COUNTRY CLUB BLVD					✓								✓			
MYERS	101 S TALBERT BLVD	1/4 MILE	✓														
OLD CHARLES ENGLAND	301 SMITH AVE	1/8 MILE	✓	✓	2	2					✓						
OLD CITY LAKE	2429 CITY LAKE RD		✓	2													
PICKETT SCHOOL	200 BIESECKER RD	1/4 MILE	✓	✓	2						✓						
RADCLIFFE	301 W 9TH AVE		✓					✓									✓
ROBBINS CENTER	512 S HARGRAVE ST		✓					✓	✓								
SMITH AVENUE	811 HOLT ST							✓									
THE RIDGE CYCLE HUB	1441 RIDGE RD											✓					
TUSSEY STREET	514 TUSSEY ST		✓	✓				✓									
WASHINGTON	100 BOOKINGTON DR	1/2 MILE	✓	3				✓									✓

PARK HOURS

PARKS WITH TRAILS	5:00AM – 10:00PM
PARKS WITHOUT TRAILS	Dawn – Dusk
FINCH PARK	8:00AM – DUSK
THE RIDGE CYCLE HUB	DAWN – DUSK

SCHOOL PARK HOURS

	SCHOOL DAYS	OTHER DAYS
PICKETT SCHOOL PARK	5:00 - 7:00AM 3:00 - 10:00PM	5:00AM - 10:00PM
BINGHAM TENNIS CENTER	4:00 - 10:00PM	8:00AM - 10:00PM



MOUNTAIN BIKE TRAILS

Did you know there are two trails right here in Lexington? The trails are open to everyone, and riders of all levels can ride comfortably.

Need to do some work on your bike? Check out the new **Fixit** stand at Finch Park, which includes all the tools necessary to perform basic bike repairs and maintenance, from changing a flat to adjusting brakes and derailleurs.



TO VIEW A DIGITAL COPY, VISIT LEXINGTONNC.GOV/PARKSANDREC



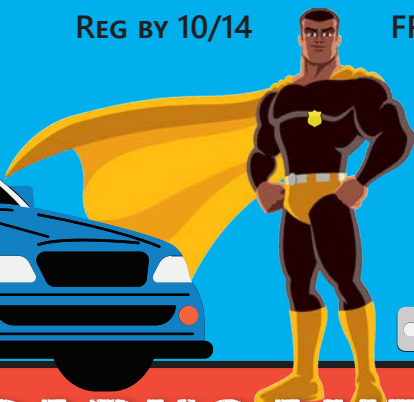
28 W CENTER STREET
LEXINGTON NC 27292

TOY RIDE ALONG

**WANTED THIS FALL:
Lexington Police and Fire
are looking for new recruits**

Send a favorite toy for a special ride along in a police car or fire truck. Toys will spend time with police officers or firefighters, then be picked up in time for Thanksgiving. There are only 20 spots with each department, so register early!

POLICE	REG BY 10/14	FREE	16249
FIRE	REG BY 10/14	FREE	16250



@LEXPARKSANDREC  