

FALL 2024  
ISSUE 14

Lexington Parks & Rec

# ACTIVE FIRST

What will you find inside?

PROGRAMS

SPORTS

EVENTS

PARKS





LEXINGTONNC.GOV/PARKSANDREC  
REGISTRATION.LEXINGTONNC.GOV



(336) 248 - 3960



ROBBINS RECREATION CENTER  
512 HARGRAVE ST  
OFFICE HOURS: 8:00AM - 5:00PM (M - F)

### MISSION

To promote community pride and wellness through diverse, intentional, and relevant leisure opportunities.

### VISION

A vibrant, healthy, energized, and progressive community.

### VALUES

Welcoming environment, accessible service, enriching experience, safe atmosphere, quality parks and programs.



# WHAT'S INSIDE

- YOUTH PROGRAMS
- ATHLETIC PROGRAMS
- SPECIAL EVENTS
- ADMINISTRATION
- PARK DIRECTORY

## PARKS AND RECREATION STAFF

Laura Duran	Parks and Recreation Director
Andrew Lance	Parks and Recreation Manager
Beverly Everhart	Services Coordinator
Keyesta Jones	Athletic Program Coordinator
Hannah Oyola	Youth Program Coordinator

## LEXINGTON CITY COUNCIL

MAYOR - Jason Hayes

Tommy Black	Becky Klass
John Burke	Jim Myers
Dr. Keith Curry	Joe Watkins
Garrett Holloway	Matt Welborn

## PARKS AND RECREATION ADVISORY BOARD

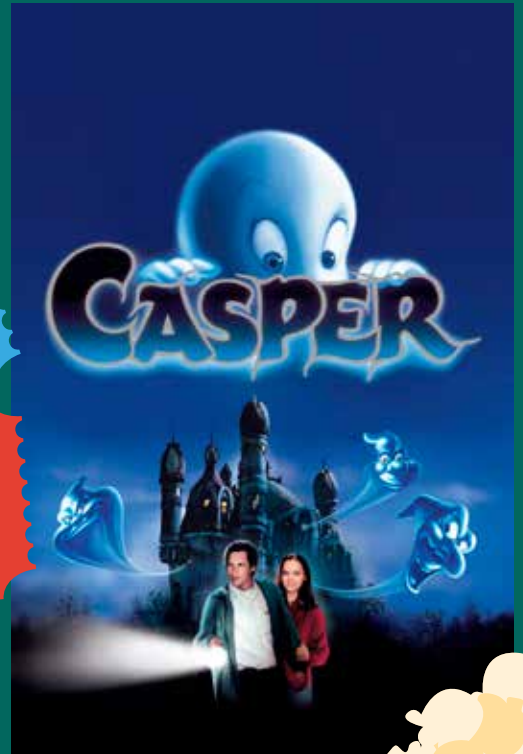
Chair - Kristi Thornhill	Tim Holt Jr.
Charles Carter Jr.	Beth Johnson
Anthony Fuller	Tammy Morris
David Hiller	Chris Phelps

**ABOUT THIS GUIDE** - The #activefirst program guide is published in the spring and fall of each year. Every effort is made to ensure the accuracy of information in this guide, but changes may occur. Please confirm program details and fees on our registration website. If you have questions or would like an additional copy of this guide, please give us a call at 336-248-3960. The guide also is published on our website at [www.lexingtonnc.gov/parksandrec](http://www.lexingtonnc.gov/parksandrec).

# REELS @ ROBBINS

**SEPTEMBER 20**  
**7:30 - 9:30**

**OCTOBER 18**  
**7:00 - 9:00**



**GRAB A BLANKET AND A CHAIR  
AND COME ENJOY A FREE  
OUTDOOR MOVIE IN THE PARK!**

**POPCORN**

**POPCORN**

# YOUTH PROGRAMS

See registration site for registration deadlines and additional program information.

## REGISTER FOR PROGRAMS @ REGISTRATION.LEXINGTONNC.GOV

### STEM Kids • AGES 7 - 12

WEDNESDAYS, 6:00PM - 6:45PM

Science, Technology, Engineering, and Math - these classes weren't this fun when we were kids. Your child won't even realize they are learning in the middle of having so much fun.

HOW HIGH CAN YOU GO	9/11	\$5 / \$6	APPLE BOAT CHALLENGE	11/6	\$5 / \$6
LEGO BRIDGE BUILDING	9/25	\$5 / \$6	TURKEY BALLOON RACES	11/20	\$5 / \$6
SNAP CIRCUITS	10/9	\$5 / \$6	CANDY CANE CODING	12/4	\$5 / \$6
PUMPKIN VOLCANO	10/23	\$5 / \$6	SALT CRYSTAL SNOWFLAKES	12/18	\$5 / \$6

### KIDS CUISINE • AGES 5 - 12

TUESDAYS, 6:00PM - 6:45PM

Learn fundamental cooking techniques and skills such as measuring, preparation, and safety in the kitchen. Don't plan on making a big dinner, because we will spoil their appetite.

FALL SNACKS	9/3	\$5 / \$6	MAC AND CHEESE BAR	10/29	\$5 / \$6
MASHED POTATO BAR	9/17	\$5 / \$6	TURKEY TREAT CUPS	11/12	\$5 / \$6
WAFFLE TACOS	9/24	\$5 / \$6	COOKIE DECORATING	12/3	\$5 / \$6
SCARY HEALTHY SNACKS	10/15	\$5 / \$6	SNOWMAN RICE KRISPIES	12/10	\$5 / \$6

### CRAFTY KIDS • AGES 5 - 12

THURSDAYS, 6:00PM - 6:45PM

Encourage your kid's creativity and artistic abilities. They will explore different mediums, techniques, and materials, and express themselves through these fun and engaging crafts.

FRIENDSHIP BRACELETS	9/12	\$5 / \$6	BEADED BRACELETS	11/7	\$5 / \$6
SKETCHING	9/26	\$5 / \$6	THANKFUL PUMPKIN	11/21	\$5 / \$6
PUMPKIN PAINTING	10/10	\$5 / \$6	ORNAMENTS	12/5	\$5 / \$6
HAUNTED HOUSE	10/24	\$5 / \$6	SANTA HATS	12/19	\$5 / \$6

## OUTDOOR EXPLORERS

There is so much to do and explore in nature, and it's all right outside your door!

WEDNESDAYS, 4:00PM - 5:00PM • AGES 7 - 12

WEATHER LESSON	9/4	\$5 / \$6
ROPE KNOT TYING	9/18	\$5 / \$6
ALL ABOUT BIRDS	10/2	\$5 / \$6
FALL SCAVENGER HUNT	10/16	\$5 / \$6

## WINTER BREAK CAMP

School is out, but FUN IS IN... field trips, park visits, crafts, games, and more.

7:30AM - 5:30PM • 1<sup>ST</sup> - 5<sup>TH</sup> GRADERS

12/23	\$10 / \$15	12/31	\$10 / \$15
12/27	\$10 / \$15	1/2	\$10 / \$15
12/30	\$10 / \$15	1/3	\$10 / \$15

# REGISTER FOR PROGRAMS



## ONLINE

REGISTRATION.LEXINGTONNC.GOV



## IN PERSON

ROBBINS REC CENTER  
512 HARGRAVE STREET



## PROGRAM FEES

RESIDENTS / NON CITY RESIDENTS

### PRESCHOOL PLAYDATES • AGES 2 - 5

WEDNESDAYS, 10:30AM - 11:00AM

Let your preschooler get some of their morning energy out in this fun and engaging class.

FALL SNACKS	9/11	\$2 / \$3
SPORTS @ ROBBINS	9/25	\$2 / \$3
TUMBLING	10/9	\$2 / \$3
T-BALL @ ROBBINS	10/23	\$2 / \$3
TURKEY CRAFT	11/6	\$2 / \$3
SOCCER @ ROBBINS	11/20	\$2 / \$3
WINTRY SNACKS	12/4	\$2 / \$3
SPORTS @ ROBBINS	12/18	\$2 / \$3

### TOTS CUISINE • AGES 3 - 4

TUESDAYS, 5:30PM - 6:00PM

Work with your tot to make a fun and delicious treat that you can snack on together. They will learn about following recipes, food preparation, and using creativity in the kitchen.

FALL SNACKS	9/3	\$5 / \$6	SANDWICHES ON A STICK	10/29	\$5 / \$6
ANIMAL FACE TOAST	9/17	\$5 / \$6	TURKEY TREAT CUPS	11/12	\$5 / \$6
SPIDER OREOS	9/24	\$5 / \$6	GINGERBREAD DECORATING	12/3	\$5 / \$6
SCARY HEALTHY SNACKS	10/15	\$5 / \$6	REINDEER GRAHAMS	12/10	\$5 / \$6

### CRAFTY TOTS • AGES 3 - 4

THURSDAYS, 5:30PM - 6:00PM

Unleash your child's creativity and inner artist! Together you will try out different methods and create works of art worthy of a prime spot on the fridge.

CRAFT STICK SCARECROW	9/12	\$5 / \$6	FINGERPRINT TURKEY	11/7	\$5 / \$6
RAINMAKERS	9/26	\$5 / \$6	PAPERBAG TURKEY	11/21	\$5 / \$6
PUMPKIN PAINTING	10/10	\$5 / \$6	ORNAMENTS	12/5	\$5 / \$6
PUMPKIN PEOPLE	10/24	\$5 / \$6	SANTA HATS	12/19	\$5 / \$6

## FALL TUMBLING

Get your kids active and tumbling! Kids will learn basic stretching techniques and tumbling skills such as somersaults, cartwheels, handstands, and so much more!

MONDAYS, 5:00PM - 5:30PM

AGES 4 - 6

9/9 - 9/30	\$10 / \$12
10/7 - 10/28	\$10 / \$12
11/18 - 12/9	\$10 / \$12

MONDAYS, 5:30PM - 6:00PM

AGES 7 - 12 \*BEGINNER\*

9/9 - 9/30	\$10 / \$12
10/7 - 10/28	\$10 / \$12
11/18 - 12/9	\$10 / \$12

MONDAYS, 6:00PM - 6:30PM

AGES 7 - 12 \*ADVANCED\*

9/9 - 9/30	\$10 / \$12
10/7 - 10/28	\$10 / \$12
11/18 - 12/9	\$10 / \$12

# ATHLETICS

See registration site for registration deadlines and additional program information.

## REGISTER FOR PROGRAMS @ REGISTRATION.LEXINGTONNC.GOV

### COED ADULT SOFTBALL

Ready to hit some dingers? Get your team together, then come out and show what you got! 7-game season plus playoffs. Season starts September 16.

MONDAY/WEDNESDAY NIGHTS

SEPTEMBER - NOVEMBER      \$325 TEAM FEE

### SPORTS SAMPLERS

Let your little one try out baseball, soccer, basketball, and football without committing to a full season.

MONDAYS & WEDNESDAYS, 5:00PM - 5:30PM • AGES 3 - 5

9/16 - 9/25      \$10 / \$12 

10/14 - 10/23      \$10 / \$12

### SKATEBOARDING SKILLS

Kids will be guided through skills like dropping in, ollies, kick turns, pumps, and other skills along with park etiquette by an experienced local skater.

SATURDAYS, 9:30AM - 10:20AM • AGES 5+

9/7 - 11/9      \$10 / \$12 (PER CLASS)

### GIRLS LACROSSE

A perfect introduction to the game of lacrosse, girls will learn basic skills and gameplay.

SATURDAYS, 10:00AM - 12:00PM • 2ND - 9TH GRADERS

9/7 - 11/2      \$20 / \$25

### TRY TENNIS & TRY PLAY

Lexington Parks and Recreation is teaming up with Atlantic Coast Tennis and the USTA to bring tennis back to Lexington! These classes are FREE for city residents thanks to generous donations made by and in honor of Evelyn Bingham. Non residents can register at [www.trytennis.net](http://www.trytennis.net) but will have to pay the second fee listed.

### TRY TENNIS

Interested in learning about tennis? Try Tennis is an instructional tennis program and includes six+ hours with a tennis instructor, new Dunlop tennis racket, and a Try Tennis player gift.

SATURDAYS, 9:00AM - 10:00AM • AGES 8-11

9/14 - 10/5      \$0 / \$40

10/19 - 11/9      \$0 / \$40

SATURDAYS, 10:00AM - 11:30AM • AGES 11-14

9/14 - 10/5      \$0 / \$40

10/19 - 11/9      \$0 / \$40

WEDNESDAYS, 6:30PM - 8:00PM • AGES 18+

9/11 - 10/2      \$0 / \$40



### TRY PLAY

Try Play is a fun and engaging program that allows adult players to learn the basics of playing a tennis match and build confidence in their tennis skills.

THURSDAYS, 6:30PM - 8:00PM • AGES 18+

9/11 - 10/2      \$0 / \$50

---

# YOUTH SOCCER

---



Kids will learn the values of team sports and soccer fundamentals while competing in a fun and positive environment.

Registrations end August 19

3 - 4 Coed	\$50 / \$60
5 - 6 Coed	\$50 / \$60
7 - 9 Coed	\$50 / \$60
10 - 12 Coed	\$50 / \$60

---



## YMCA &

## LEX PARKS & REC



---

# YOUTH BASKETBALL

---

Learn dribbling, shooting, defense and spacing in the winter basketball league. Teams will practice and play from December - February.

Registration starts October 1

5 - 6 Coed	\$50 / \$60
7 - 8 Coed	\$50 / \$60
9 - 10 Boys	\$50 / \$60
9 - 12 Girls	\$50 / \$60
11 - 12 Boys	\$50 / \$60

---

# SPECIAL EVENTS



## LIGHT UP THE BLOCK

Think your home has the best lights in the neighborhood? Enter your home in our Christmas decorating contest.

## TOY RIDE ALONG

Send your kid's toy on the trip of a lifetime with Lexington Police and Fire. Register by October 30.



# STARGAZING @ FINCH

OCTOBER 25 • 8:00PM - 10:00PM

Explore space with the Lexington Astronomy Club as we look at the moon, stars, and planets.

# GRINCH @ FINCH

DECEMBER 7 • 9:00AM - 11:00AM

The Grinch is here! This is a perfect opportunity to take a FREE picture for your family Christmas card.



# ADMINISTRATION

## PHOTO USE

Lexington Parks and Recreation may photograph or video participants enrolled in activities, events, or programs, or in City of Lexington parks. These are used in program guides, brochures, website, social media, and other media publications.

## REGISTRATION INFORMATION

The full registration fee for a program is due at the time of registration. No spots will be held without full payment. Programs at capacity will have a waiting list and additional people may be added if we are able. Residents are those that live within city limits and support Lexington Parks and Recreation through property taxes. The best way to determine residency is to check your property tax bill or contact us.

## CHANGES AND REFUNDS

Programs may be adjusted or cancelled if the minimum number of participants is not met by the registration deadline. Full refunds are given for cancelled programs. Payments made in cash or by check are refunded in accordance with our accounts payable schedule, and are typically issued within 7-14 business days. Refunds are not given for programs after they begin.

## INCLEMENT WEATHER

In the event of inclement weather, programs or events may be cancelled or postponed. For cancellations and updates, call our weather hotline at 336-248-3969 or check our Facebook page. Shelter reservation fees are non-refundable once they have been reserved. If you would like to cancel due to inclement weather, an alternate date can be scheduled, but must be done within three business days, and can only be rescheduled within the current calendar year.

# RENTALS

## ROBBINS RECREATION CENTER

Our large activity room is the perfect place for your next party or gathering. The room can hold 60-75 people. Tables and chairs are provided, and we handle all the cleaning after the party is done. The cost is \$40 per hour (minimum 3 hours), and a refundable \$100 security deposit is due at the time of reservation.

## ATHLETIC FIELDS

Athletic fields in city parks can be rented for practices and games as long as they are not being used for departmental programming.

## PARK / SHELTER INFORMATION

All parks are open 365 days a year, except Finch Park, which is closed on Thanksgiving and Christmas. Shelters are available to reserve at Finch Park; all other shelters are on a first-come, first-served basis.

### FINCH PARK SHELTER TIME SLOTS

APRIL - SEPTEMBER	OCTOBER - MARCH
8:00AM - 11:00AM	10:00AM - 1:00PM
12:00PM - 3:00PM	2:00PM - 5:00PM
4:00PM - 7:00PM	

The cost is \$25 per time block for city residents and \$50 for non-residents. Reservation fees are non-refundable. If a cancellation due to inclement weather is necessary, an alternate date can be scheduled, but must be done within three (3) business days, and be for a date within the current calendar year.

## READY TO RENT?

To reserve the Robbins Recreation Center or one of our athletic fields, please contact Andrew Lance at 336-248-3960, or [aglance@lexingtonnc.gov](mailto:aglance@lexingtonnc.gov). Visit [registration.lexingtonnc.gov](http://registration.lexingtonnc.gov) to request and pay for shelter reservations.



**Electric • Natural Gas • Water Resources**

*Award Winning, Reliable, Cleaner Energy Alternatives*

*Serving Davidson County Since 1904*

# PARK DIRECTORY

		WALKING TRAIL (MI)	PLAYGROUND	SHELTER	COURTS			FIELDS			MOUNTAIN BIKE TRAIL	POOL	GOLF COURSE	SPLASH PAD	SKATE PARK	SEATING AREA
					TENNIS	PICKLEBALL	BASKETBALL	BASEBALL	SOFTBALL	MULTIPURPOSE						
BINGHAM TENNIS CENTER	205 W HEMSTEAD ST				8	2										
CECIL STREET	106 CECIL ST		✓				✓									
CHILDERS	100 SWING DAIRY RD		✓	✓			✓									
EAST 3RD AVENUE	315 E 3RD AVE		✓				✓									
ERLANGER	605 PARK CIR	1/3	✓													✓
FINCH	15 PAUL BECK RD	1/4	2	5			✓	✓	2	✓	✓					✓
FOURTH STREET	412 E 4TH ST		✓	✓			2									
GREEN NEEDLES	264 CHARLOTTE DR		✓	✓			✓			✓						
GRIMES	25 HEGE DR	1/2	✓		✓											✓
HILLCREST CIRCLE	8 HILLCREST CIR															✓
HOLT-MOFFITT	101 W 9TH AVE							✓								
HOLT STREET	602 HOLT ST		✓				✓									
JAYCEE	307 BURLER ST	1/4	✓	✓			✓									
LEXINGTON AQUATIC PARK	207 FOREST ROSE DR										✓					
LEXINGTON GOLF CLUB	200 COUNTRY CLUB BLVD				✓	2						✓				
MYERS	101 S TALBERT BLVD	1/4	✓													
OLD CHARLES ENGLAND	301 SMITH AVE	1/8	✓	✓	2	2				✓						
OLD CITY LAKE	2429 CITY LAKE RD		✓	2												
PICKETT SCHOOL	200 BIESECKER RD	1/4	✓	✓	2					✓						
RADCLIFFE	301 W 9TH AVE		✓				✓									✓
RIDGE CYCLE HUB	1441 RIDGE RD										✓					
ROBBINS REC CENTER	512 HARGRAVE ST		✓				✓	✓								
SMITH AVENUE	811 HOLT ST						✓									
TUSSEY STREET	514 TUSSEY ST		✓	✓			✓									
WASHINGTON	100 BOOKINGTON DR	1/2	✓	3			✓							✓		

## PARK HOURS

PARKS <u>WITH</u> TRAILS	5:00AM - 10:00PM
PARKS <u>WITHOUT</u> TRAILS	DAWN - DUSK
FINCH PARK	8:00AM - DUSK
THE RIDGE CYCLE HUB	DAWN - DUSK

## SCHOOL PARK HOURS

	SCHOOL DAYS	OTHER DAYS
PICKETT	5:00 - 7:00AM 3:00 - 10:00PM	5:00AM - 10:00PM
BINGHAM	4:00 - 10:00PM	8:00AM - 10:00PM

## MOUNTAIN BIKE TRAILS

Did you know there are two trails right here in Lexington? The trails are open to everyone, and riders of all levels can ride comfortably.

**Need to do some work on your bike?** Check out the **Fixit** stand at Finch Park, which includes all the tools necessary to perform basic bike repairs and maintenance, from changing a flat to adjusting brakes and derailleurs.



TO VIEW A DIGITAL COPY, VISIT [LEXINGTONNC.GOV/PARKSANDREC](http://LEXINGTONNC.GOV/PARKSANDREC)



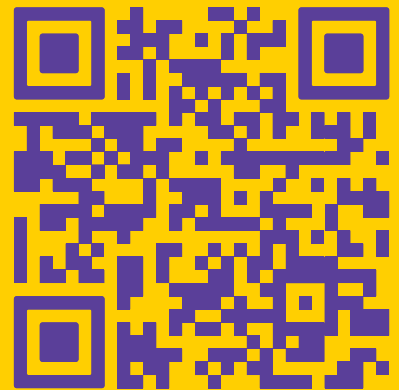
28 W CENTER STREET  
LEXINGTON NC 27292

# ACTIVE FIRST

**CREATE YOUR ACCOUNT TO  
REGISTER & RESERVE ONLINE!**

**[REGISTRATION.LEXINGTONNC.GOV](http://REGISTRATION.LEXINGTONNC.GOV)**

- EASY TO USE
- AVAILABLE 24/7
- MOBILE-FRIENDLY
- SAFE AND SECURE



**SCAN ME**