

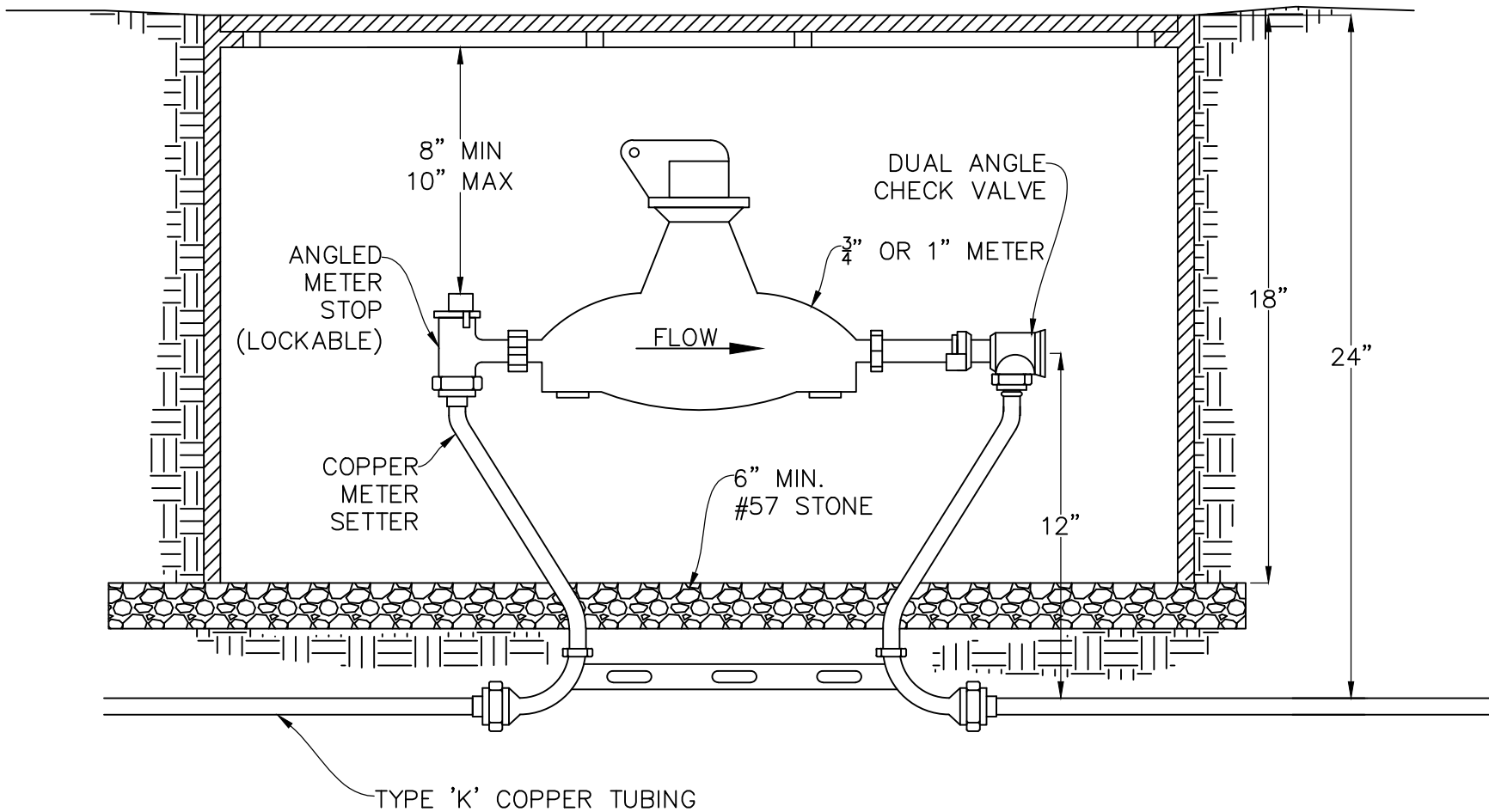
NOT TO SCALE

# 3/4" AND 1" SERVICE INSTALLATION

REV.	STD. NO.
1	6101A



CITY OF LEXINGTON  
INFRASTRUCTURE  
DEVELOPMENT STANDARDS



NOTES:

1. SEE CITY OF LEXINGTON APPROVED MATERIALS LIST FOR APPROVED BOXES AND METER SETTERS.
2. METER BOX SHALL BE MOUNTED FLUSH WITH THE GROUND.
3. METER BOX SHALL NOT BE PLACED IN TRAFFIC AREAS OR SIDEWALKS UNLESS OTHERWISE APPROVED BY THE CITY ENGINEER.
4. METER BOX SHALL BE INSTALLED SO THAT IT IS PERPENDICULAR TO THE STREET.

NOT TO SCALE

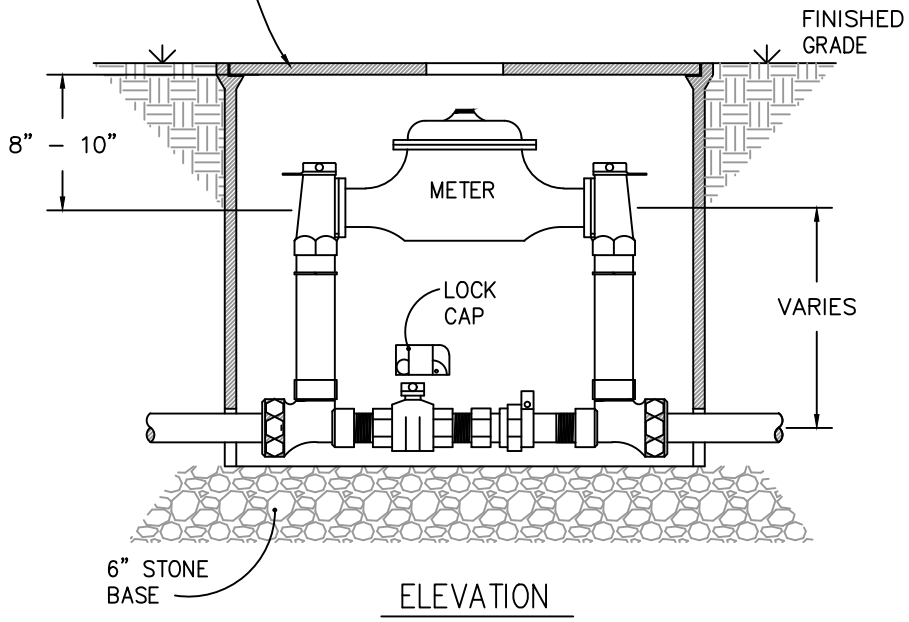
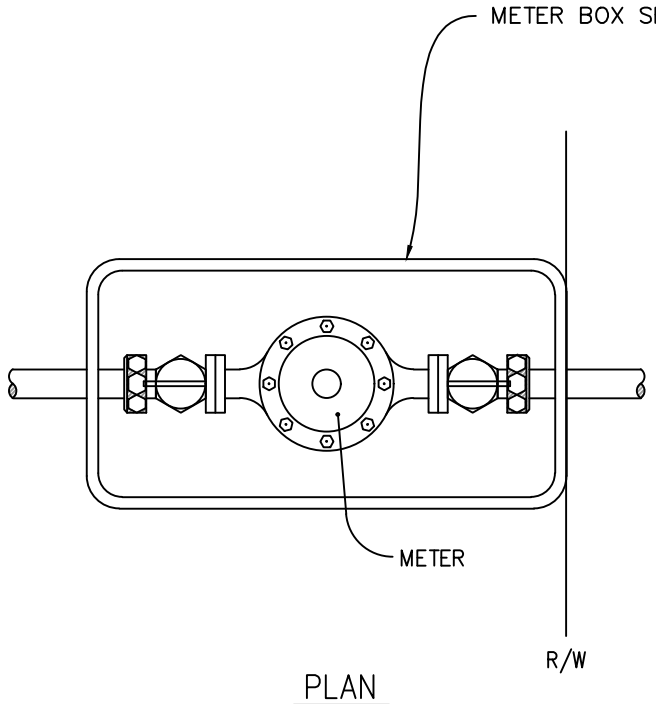
## 3/4" AND 1" METER INSTALLATION AND BOX

REV.	STD. NO.
1	6101B



CITY OF LEXINGTON  
INFRASTRUCTURE  
DEVELOPMENT STANDARDS

NOTE: ONLY ONE TYPE OF COPPERSETTER ALLOWED.



NOTE:  
 PIPING TO BE BRASS & COPPER TUBING & SHALL BE EQUIPPED W/ANGLED CHECK VALVE OUTLETS & BY-PASS FLANGED VALVE OR BY-PASS FLANGED BALL VALVE INLETS AS FURNISHED BY FORD 70 SERIES (VBB77-XXB-11-7-NLSTYLE)

NOT TO SCALE

# 1-1/2" AND 2" METER INSTALLATION AND VAULT

REV.	STD. NO.
1	6101C



CITY OF LEXINGTON  
 INFRASTRUCTURE  
 DEVELOPMENT STANDARDS

GENERAL NOTES:

METER AND BY-PASS ASSEMBLY TO BE DUCTILE IRON FLANGED PIPE

METER FACE TO BE A MAXIMUM OF 2' BELOW FINISHED GRADE

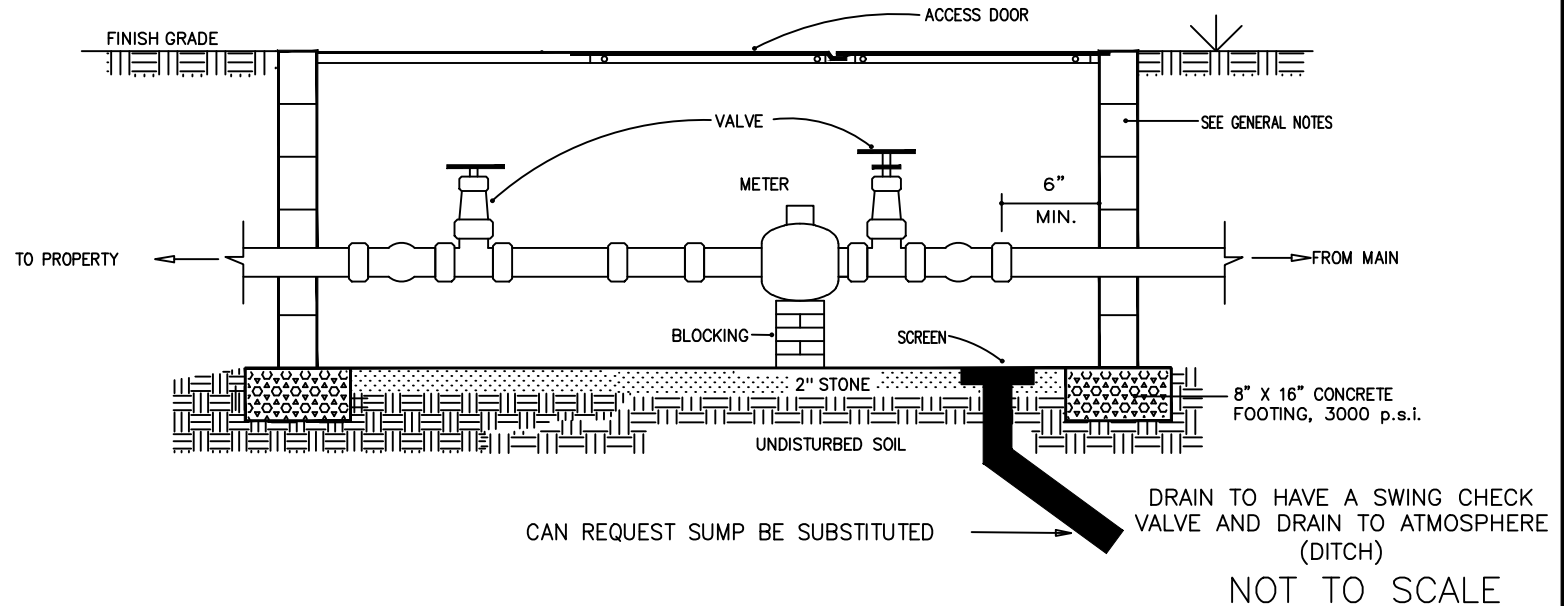
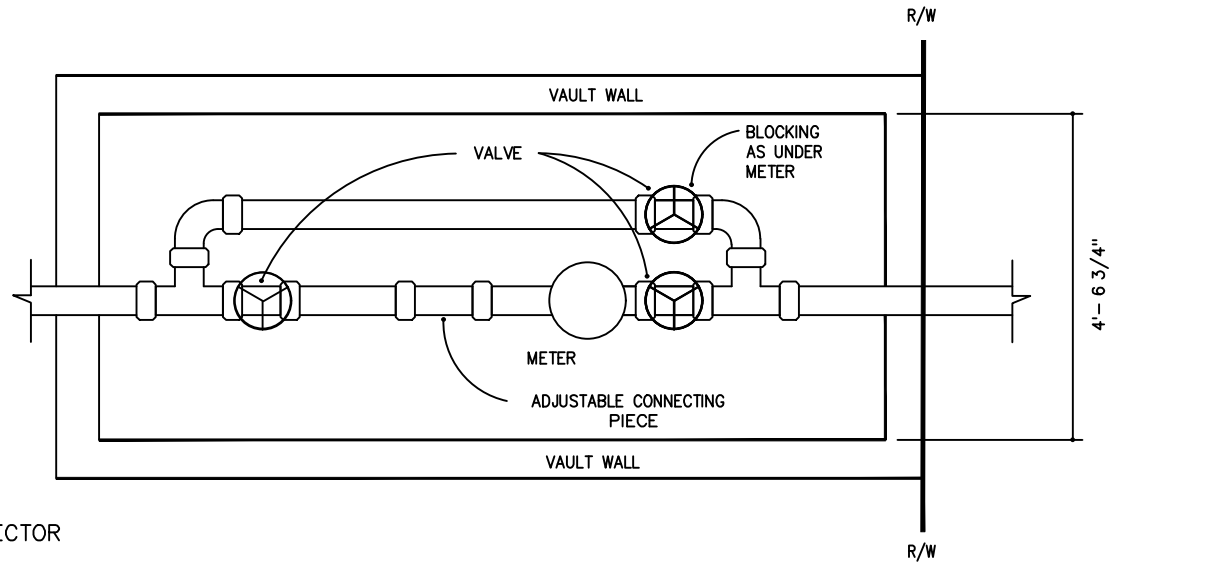
ACCESS DOOR TO BE ALUMINUM AS MANUFACTURED BY BILCO, HALLIDAY OR APPROVED EQUAL

VALVES SHALL BE IRON BODY TYPE

EITHER SOLID BRICK, SOLID BLOCK OR PRECAST CONCRETE MAY BE USED

BACK-FLOW PROTECTION MAY BE REQUIRED BY THE CITY OF LEXINGTON PUBLIC WORKS DIRECTOR

CONNECTING PIECE TO BE SMITH-BLAIR, UNIFLANGE, OR APPROVED EQUAL

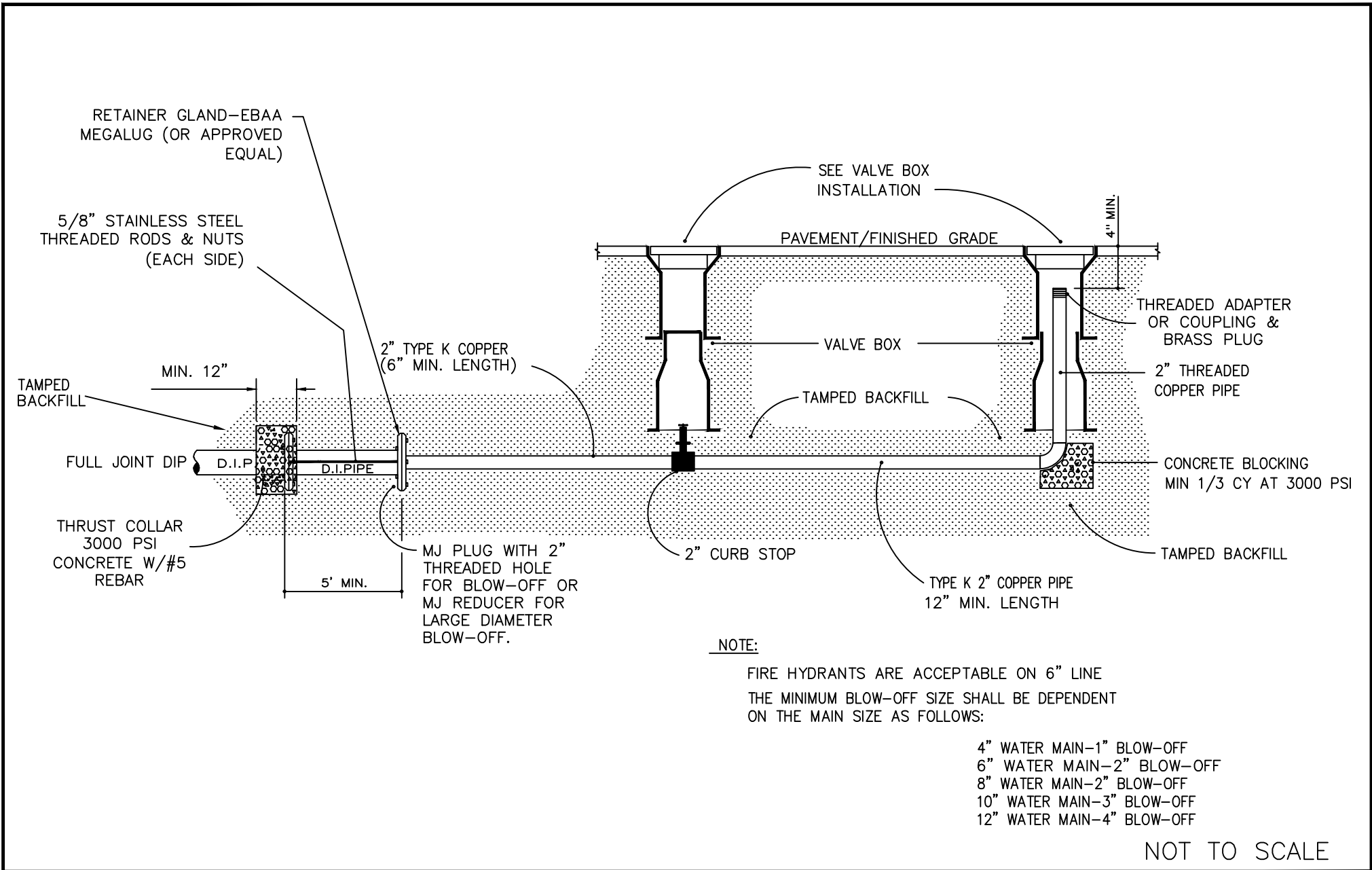


# 4" METER INSTALLATION AND VAULT

REV.	STD. NO.
1	6101D



CITY OF LEXINGTON  
INFRASTRUCTURE  
DEVELOPMENT STANDARDS

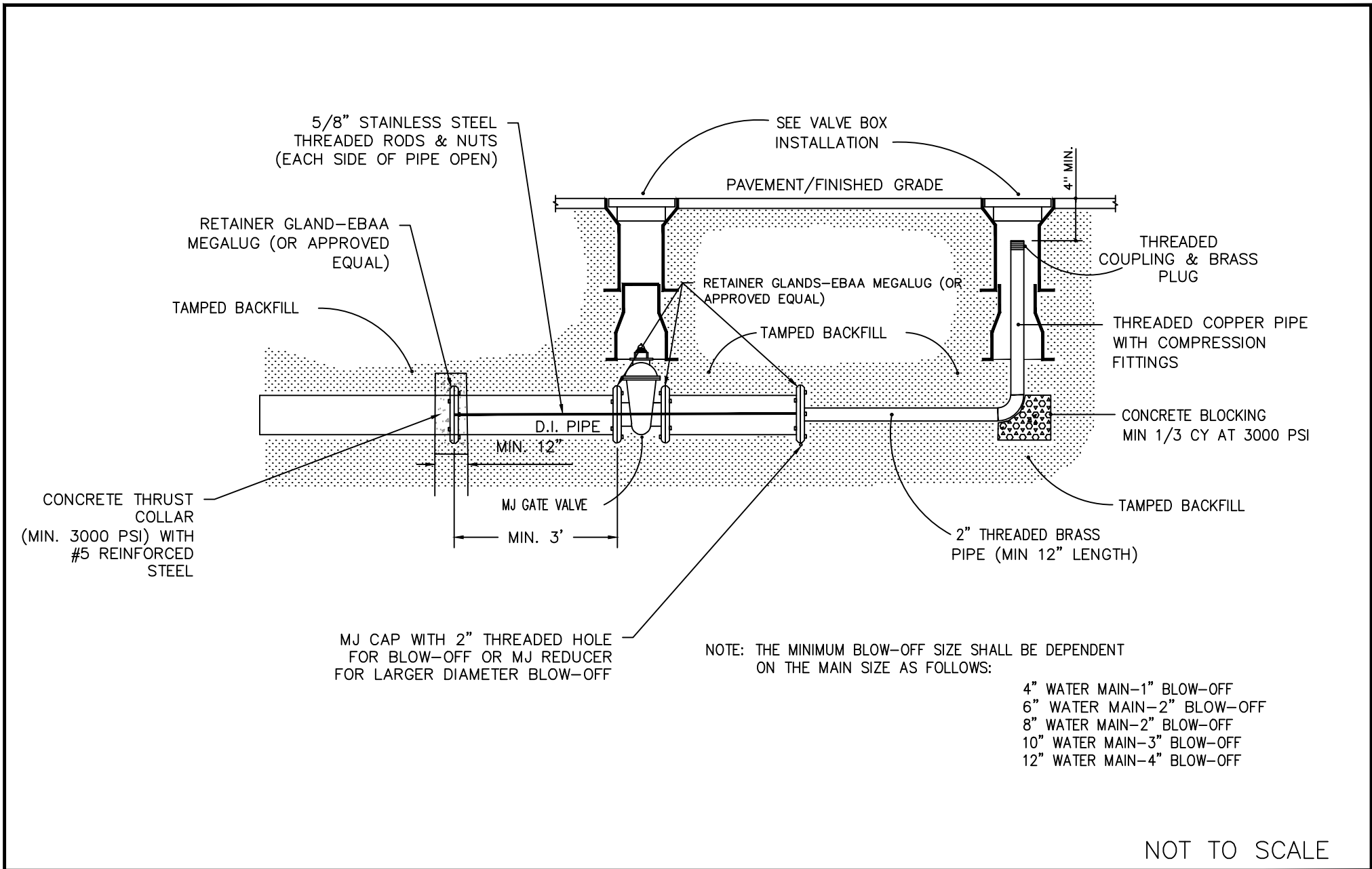


# STANDARD BLOW-OFF ASSEMBLY

REV.	STD. NO.
1	6102



CITY OF LEXINGTON  
 INFRASTRUCTURE  
 DEVELOPMENT STANDARDS

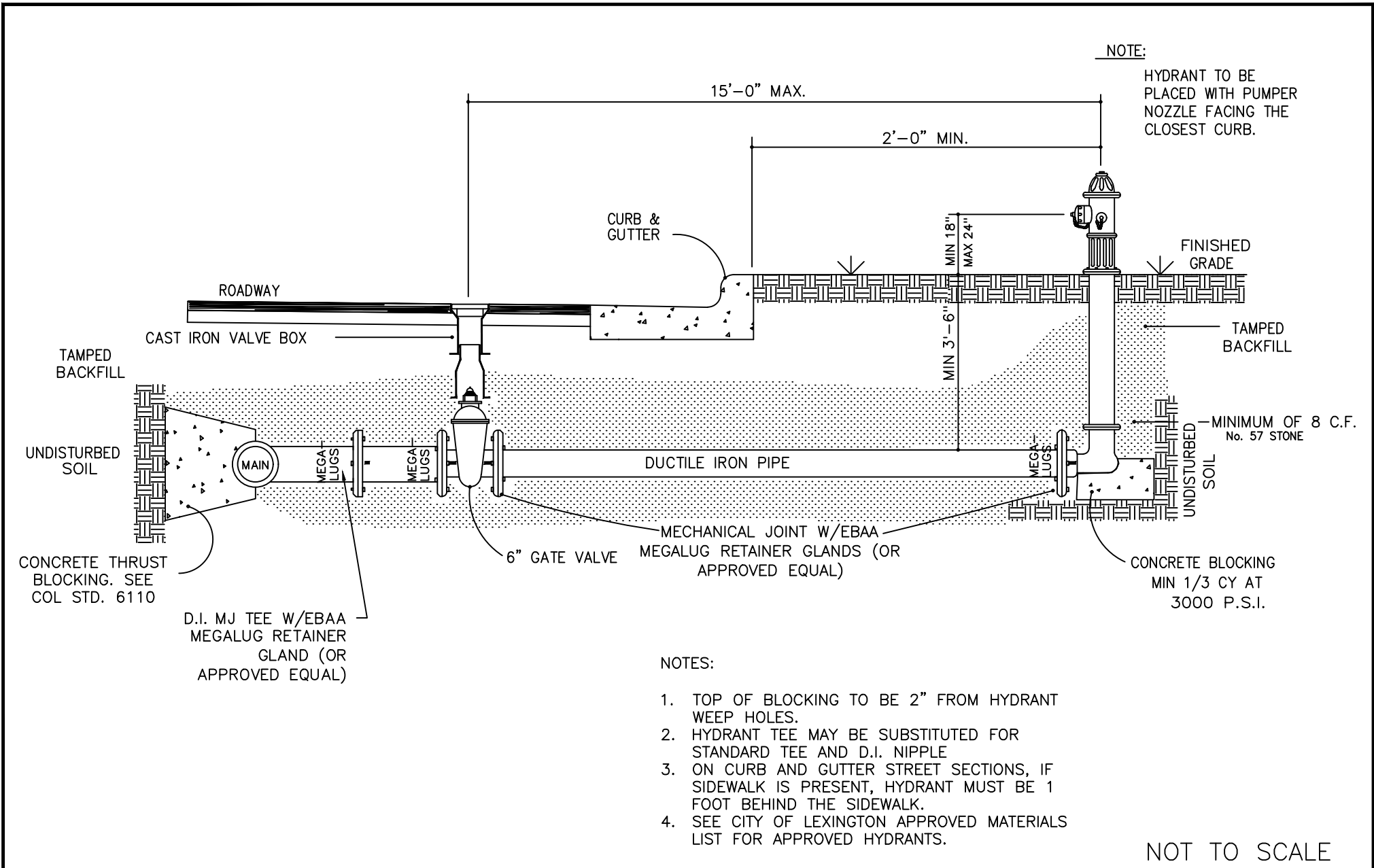


# BLOW-OFF ASSEMBLY FOR FUTURE MAIN EXTENSION

REV.	STD. NO.
1	6103



CITY OF LEXINGTON  
INFRASTRUCTURE  
DEVELOPMENT STANDARDS

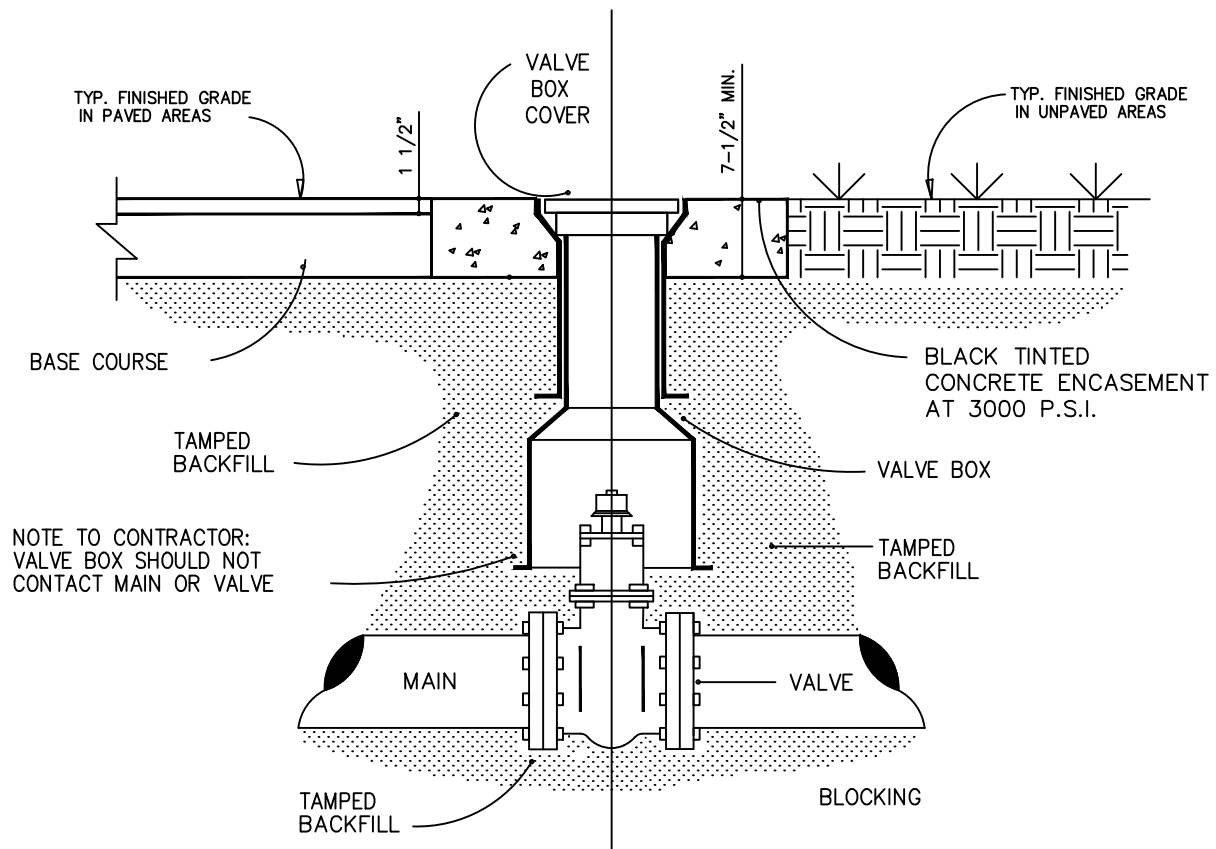


REV.	STD. NO.
1	6104

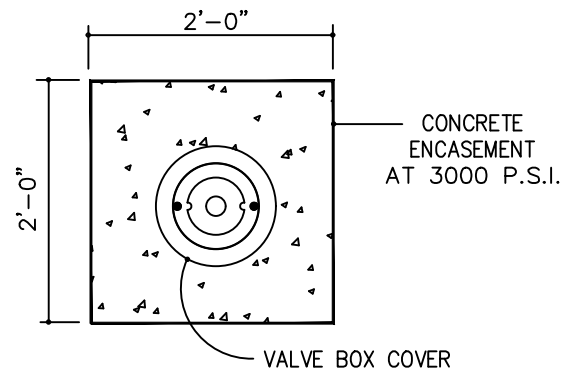
# FIRE HYDRANT INSTALLATION



CITY OF LEXINGTON  
INFRASTRUCTURE  
DEVELOPMENT STANDARDS



NOTE TO CONTRACTOR:  
VALVE BOX SHOULD NOT  
CONTACT MAIN OR VALVE



PLAN

SECTION

NOTE:

1. D.I.P. MAY BE USED FOR VALVE BOX EXTENSIONS.
2. VALVE OPERATING NUT MUST BE EXTENDED TO NO LESS THAN 4' FROM THE SURFACE.

NOT TO SCALE

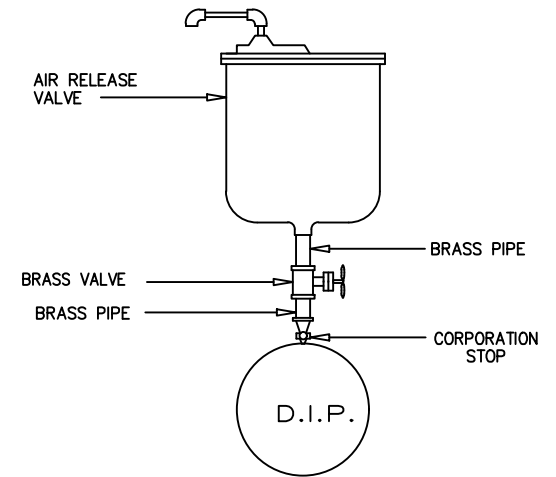
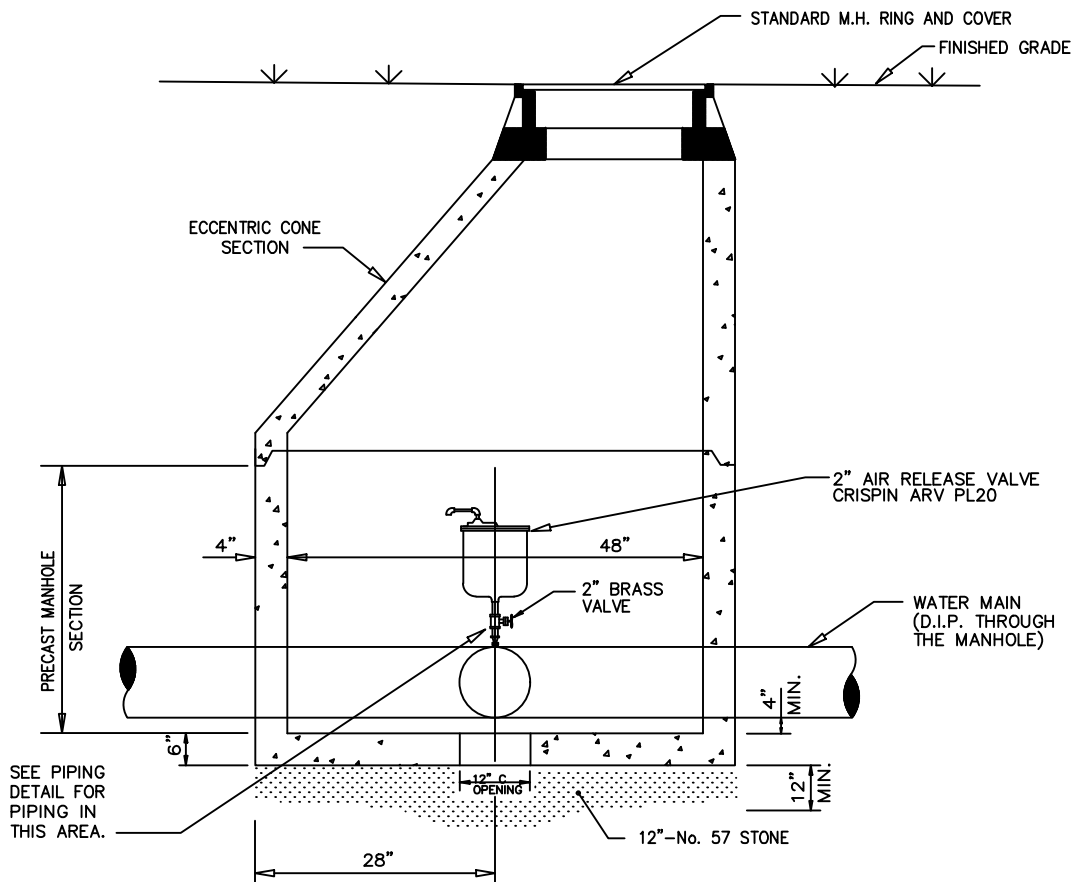
# VALVE BOX INSTALLATION

REV.	STD. NO.
1	6105



CITY OF LEXINGTON  
INFRASTRUCTURE  
DEVELOPMENT STANDARDS





PIPING DETAIL

NOTES:

1. TAP SIZE AND ISOLATION VALVE TO BE SAME SIZE AS AIR RELEASE VALVE.
2. ALL PIPING AND FITTINGS, IN THE MANHOLE, SHALL BE BRASS OR BRONZE UNLESS NOTED.
3. MANHOLE STEPS SHALL BE PLACED 16" O.C. WHEN DEPTH OF MANHOLE EXCEEDS 5 FEET.
4. CENTER MANHOLE OPENING, FOR MANHOLE DEPTHS LESS THAN 5'.
5. MANHOLE COVER SHOULD READ WATER

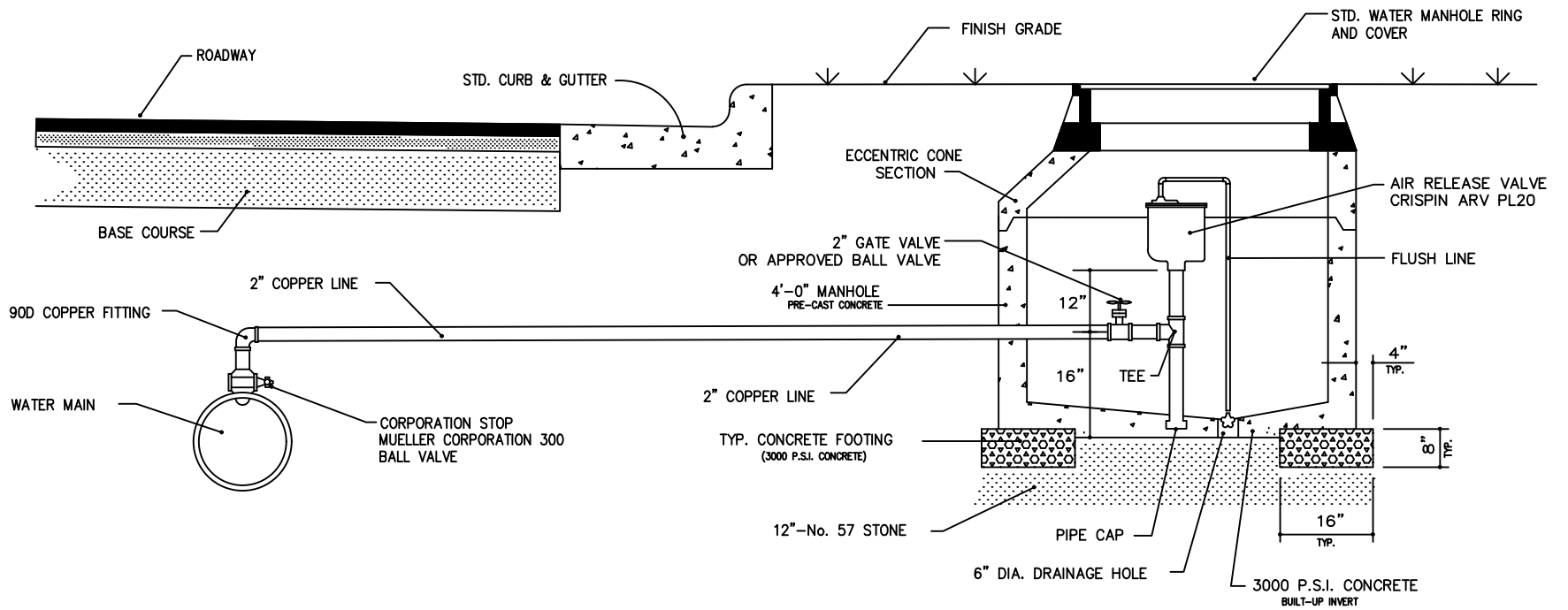
NOT TO SCALE

## AIR RELEASE MANHOLE FOR WATER MAINS, TYPE 1

REV.	STD. NO.
1	6106A



CITY OF LEXINGTON  
INFRASTRUCTURE  
DEVELOPMENT STANDARDS



**NOTE:**

CORPORATION STOP SHALL BE LOCATED IN THE TOP OF WATER MAIN.

MANHOLE STEPS SHALL BE PLACED 16" O.C. WHEN DEPTH OF MANHOLE EXCEEDS 5 FEET.

**NOTE:**

ALL PIPING AND FITTINGS IN THE MANHOLE SHALL BE COPPER.

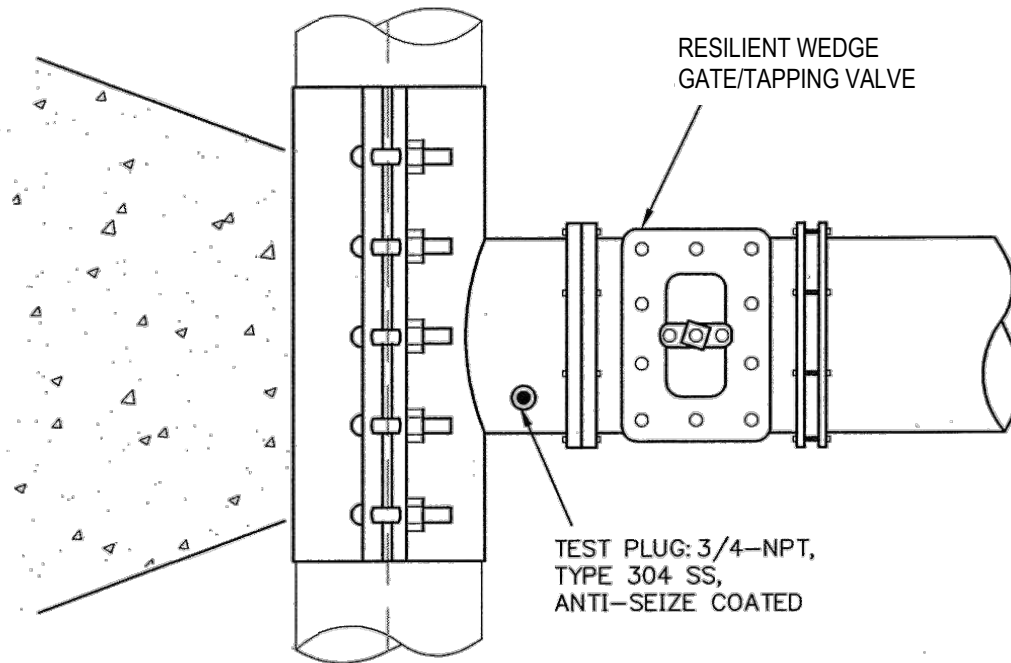
NOT TO SCALE

# AIR RELEASE MANHOLE FOR WATER MAINS, TYPE 2

REV.	STD. NO.
1	6106B

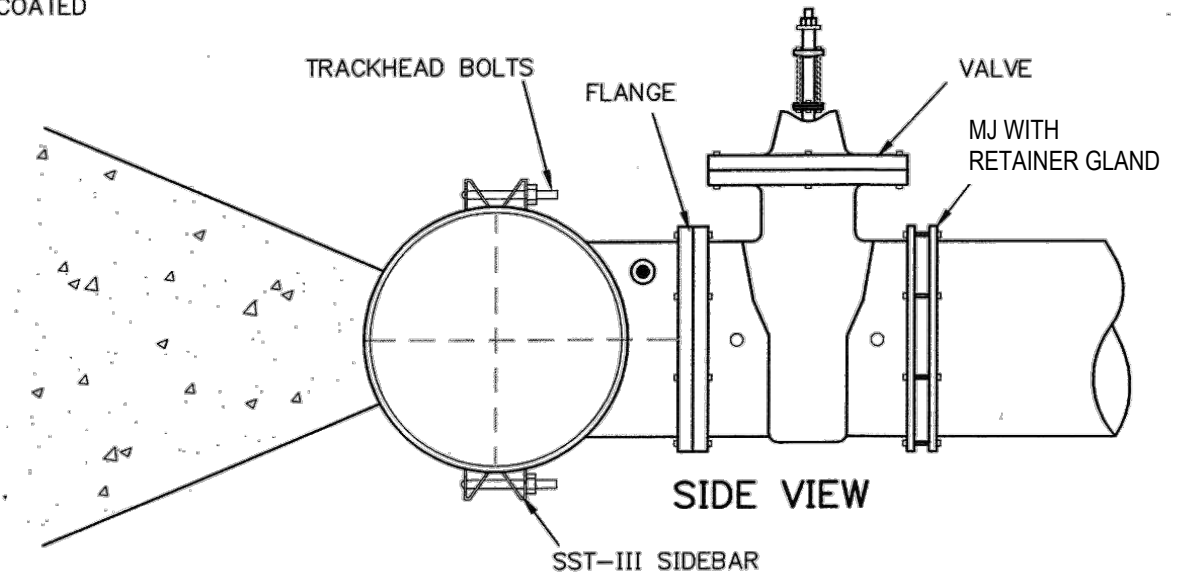


CITY OF LEXINGTON  
INFRASTRUCTURE  
DEVELOPMENT STANDARDS



TOP VIEW

1. TAPPING SLEEVE SHALL BE ROMAC SST-III OR SMITH BLAIR 665 OR APPROVED EQUAL
2. PIPE/FITTING SURFACES SHALL BE WRAPPED WITH 8 MIL POLYETHYLENE FILM AND SHALL PREVENT CONCRETE FROM CONTACTING PIPE & FITTINGS
3. CONCRETE SHALL NOT COVER MECHANICAL JOINTS NOR RESTRICT ACCESS TO BOLTS AND GLANDS
4. SEE CITY OF LEXINGTON DETAIL 6110 FOR BLOCKING REQUIREMENTS



SIDE VIEW

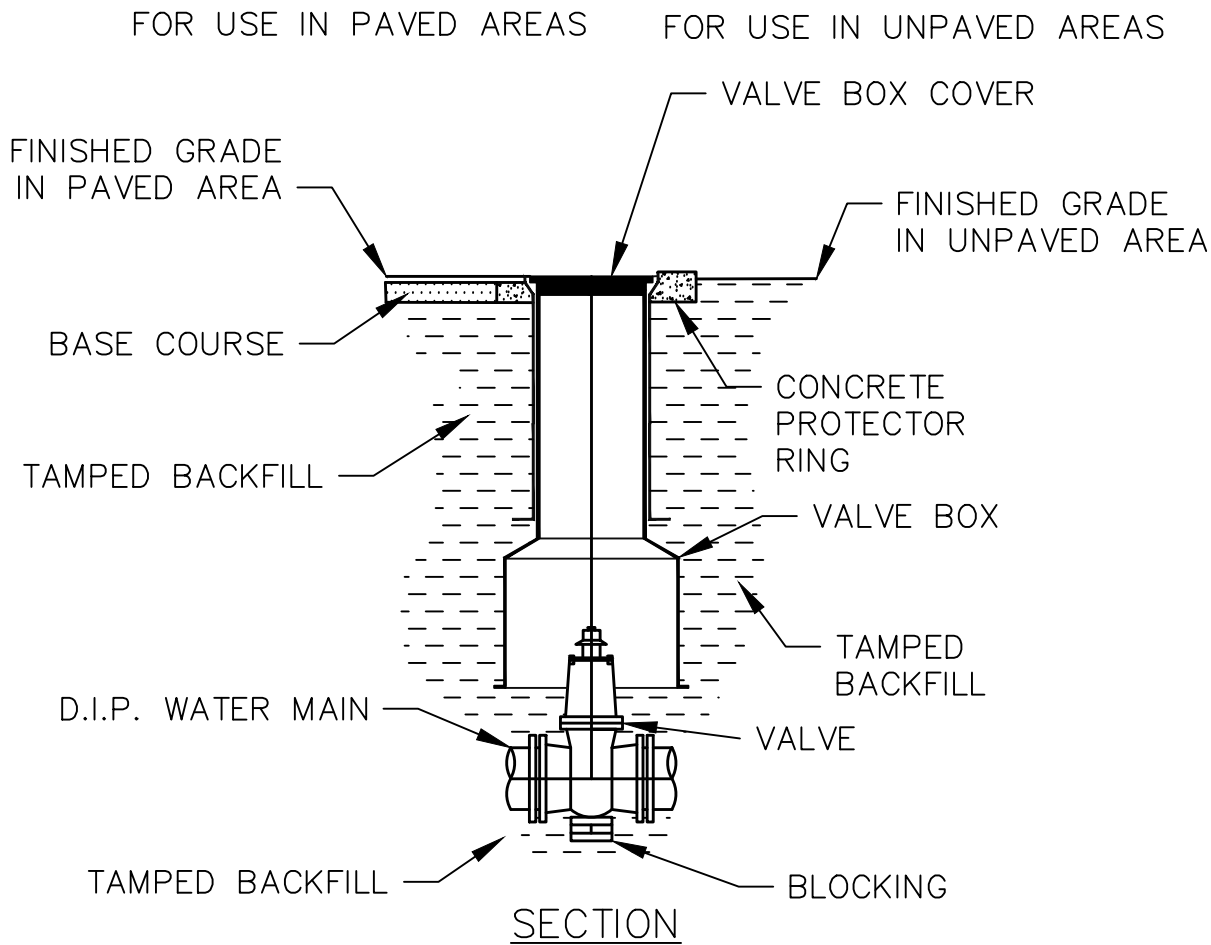
NOT TO SCALE

# TAPPING SLEEVE & VALVE

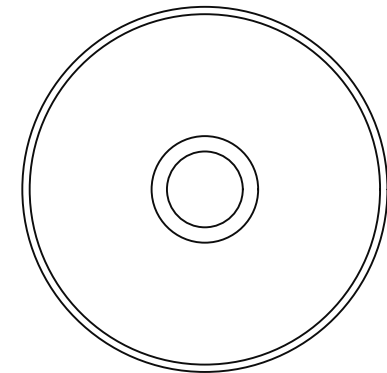
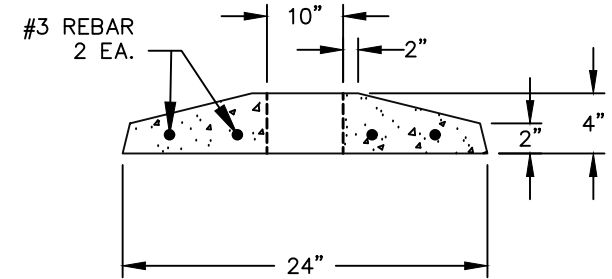
REV.	STD. NO.
1	6107



CITY OF LEXINGTON  
INFRASTRUCTURE  
DEVELOPMENT STANDARDS



CONCRETE PROTECTOR RING



NOTES:

1. VALVE BOX SHALL BE HEAVY DUTY CL 35B CAST IRON SCREW TYPE WITH "WATER" CAST IN LID.
2. VALVE BOX SHALL NOT CONTACT WATER MAIN OR VALVE.
3. CONCRETE PROTECTOR RING SHALL BE 3000 PSI CONCRETE AND USED IN ALL UNPAVED AREAS.
4. VALVE OPERATING NUT MUST BE EXTENDED TO LESS THAN 4' FROM THE FINISHED GRADE

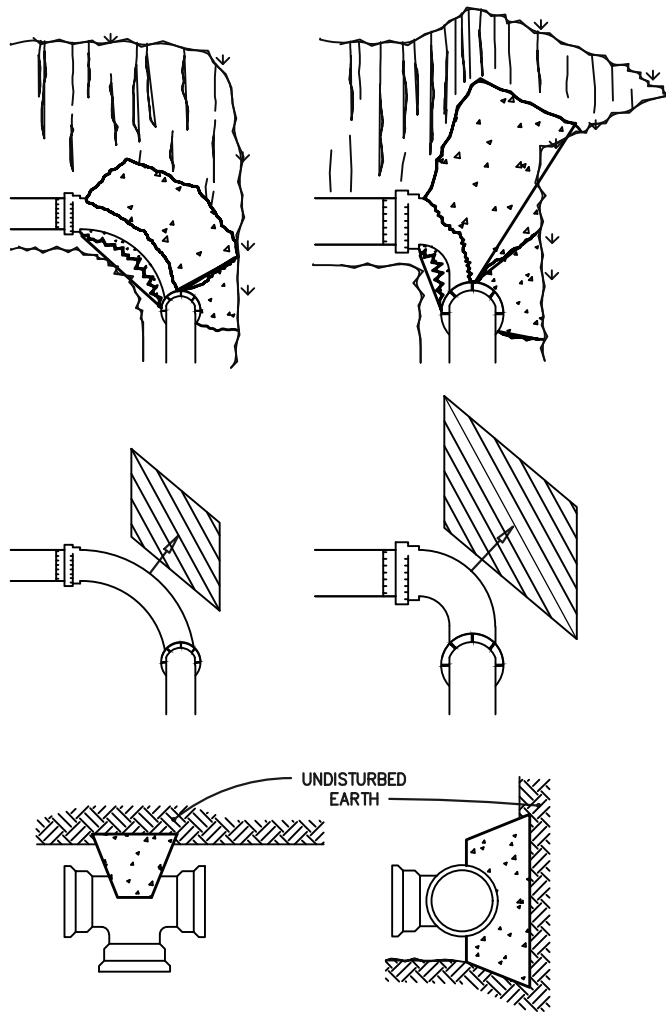
NOT TO SCALE

**STANDARD GATE VALVE &  
VALVE BOX INSTALLATION**

REV.	STD. NO.
1	6109



**CITY OF LEXINGTON  
INFRASTRUCTURE  
DEVELOPMENT STANDARDS**



MINIMUM CONCRETE BLOCKING (C.Y.) *					
NOM. PIPE DIA. IN.	TEES & DEAD ENDS	90D BEND	45D BEND	22-1/2D BEND	11-1/4D BEND
6	1/3	1/3	1/3	1/3	1/3
8	1/3	1/2	1/3	1/3	1/3
10	2/3	3/4	1/2	1/3	1/3
12	3/4	1.0	2/3	1/3	1/3
14	1.0	1-1/2	3/4	1/2	1/3
16	1-1/3	2.0	1.0	1/2	1/3
18	1-2/3	2-1/3	1-1/3	2/3	1/3
20	2.0	3.0	1-2/3	3/4	1/2
24	3.0	4-1/3	2-1/3	1-1/3	2/3

\* CONCRETE SHALL BE 3000 P.S.I. MIN.

(HORIZONTAL) BEARING AREA OF THRUST BLOCKS IN SQ. FT.					
FITTING SIZE	TEE	90° BEND	45° BEND	22.5° BEND	11.25° BEND
6	2.8	4.0	2.2	1.1	1.0
8	5.0	7.1	3.8	2.0	1.0
12	11.3	16.0	8.7	4.4	2.2
16	20.1	28.4	15.4	7.8	3.9
20	31.1	44.4	24.0	12.3	6.2
24	45.2	64.0	34.6	17.7	8.9

NOTES:

1. PIPE/FITTING SURFACES SHALL BE WRAPPED WITH 8 MIL POLYETHYLENE FILM AND SHALL PREVENT CONCRETE FROM CONTACTING PIPE AND FITTINGS.
2. CONCRETE SHALL NOT COVER MECHANICAL JOINTS NOR RESTRICT ACCESS TO BOLTS AND GLANDS.

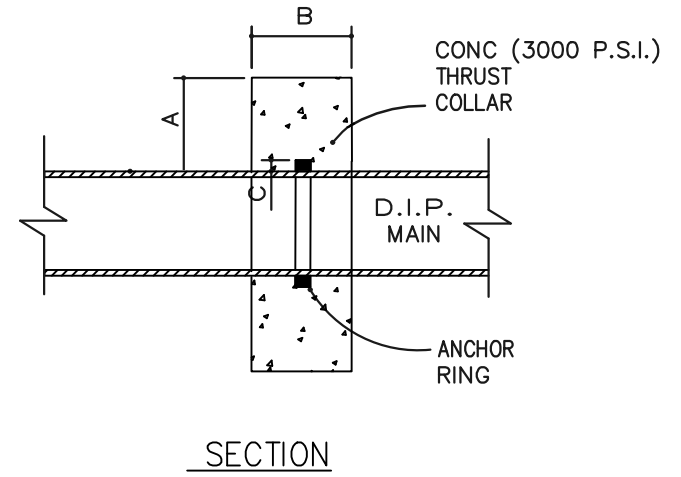
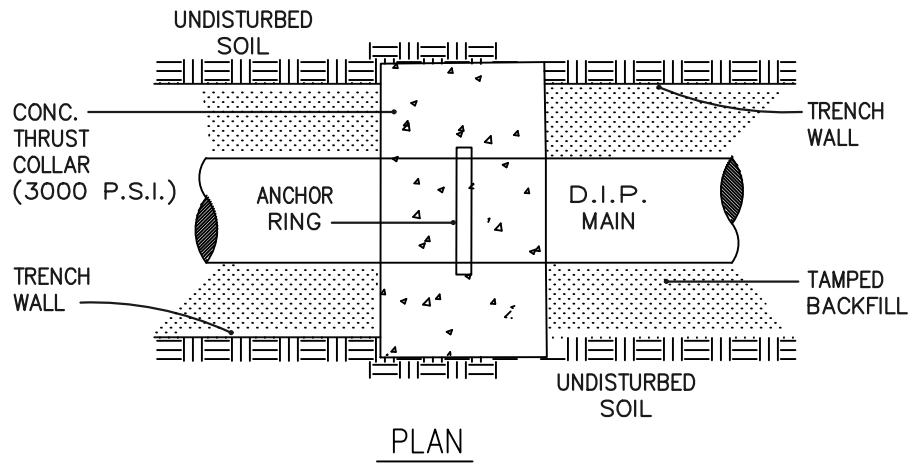
NOT TO SCALE

# STANDARD THRUST BLOCKING

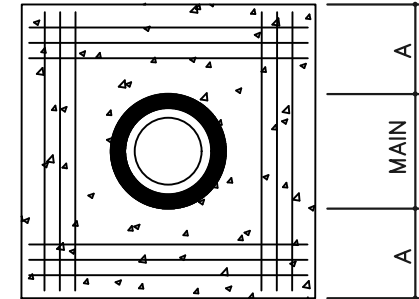
REV.	STD. NO.
1	6110



CITY OF LEXINGTON  
INFRASTRUCTURE  
DEVELOPMENT STANDARDS



SCHEDULE				
PIPE DIAMETER	CONCRETE THRUST COLLAR		ANCHOR RING	RINGS REQUIRED
	A	B		
6",8",12"	1'-0"	1'-0"	2"	ONE
16"	1'-4"	1'-0"	2"	ONE
20 "	1'-4"	1'-0"	3"	ONE
24"	1'-4"	1'-0"	3"	TWO
30"	1'-4"	1'-2"	4"	TWO
36"	1'-4"	1'-4"	4"	TWO



NOTES:

1. MINIMUM 12" EMBEDMENT INTO UNDISTURBED WALL AND TRENCH BOTTOM REQUIRED.
2. 6" TO 16" MAINS = 12-NO. 5 BARS
3. 20" TO 36" MAINS = 12-NO. 7 BARS
4. BARS SHALL BE PLACED AS SHOWN.

NOT TO SCALE

## STANDARD THRUST COLLAR INSTALLATION

REV.	STD. NO.
1	6111



CITY OF LEXINGTON  
INFRASTRUCTURE  
DEVELOPMENT STANDARDS